

EN **IP Camera 9483 - Configuration Software**
Instruction Manual





Dear Customer,

EN

With your purchase of this IP Camera, you have chosen a quality product manufactured by RADEMACHER. Thank you for the trust you have placed in us.



1.	These instructions.....	4
1.1	Application of this manual	4
1.2	Symbols used and depictions	4
1.3	Glossary - Definition	5
2.	Overview of the IP Camera	6
3.	System requirements	7
4.	Prerequisites for configuring the IP Camera settings	7
5.	Opening the configuration software of the IP Camera.....	8
5.1	The IP Camera's main menu.....	11
5.2	Parameters - OSD.....	12
5.3	Parameters - Motion Detect.....	13
5.4	Parameters - Cover Area	14
5.5	Parameters - Basic Settings	15
5.6	System - User	16
5.7	System - Time - Settings	17
5.8	System - Initialization	18
5.9	System - Device Information	19
5.10	System - System log	20
5.11	Wireless (WLAN)	21
5.11.1	Alternative WLAN connection with WPS.....	22
6.	Close settings.....	23

...describe the configuration of the IP Camera 9483 via the HomePilot® user interface. You can find this instruction manual on your HomePilot® under the following URL:

<http://homepilot.local/manual>

or in the downloads section of our website:

www.homepilot.de/downloads



The current "Brief instructions for installation and commissioning" (VBD 612-2...) can also be downloaded from our website.

Enter the respective URL into the address field of your browser.

1.1 Application of this manual

- ◆ Please read this manual through completely before operating the IP Camera.
- ◆ Please also read the instruction manuals of the accessories, if available.
- ◆ The manual is a component of the product.
- ◆ When passing the IP Camera on to a third party, this manual must be passed on as well.
- ◆ If this manual is lost, please request a replacement manual.

1.2 Symbols used and depictions

Depiction	Description
1.	Steps to be taken
2.	
◆	Itemisation
	Please read the respective manual
	further useful information

IP Camera

Network-compatible camera to transmit image data to the HomePilot®.

HomePilot®

The HomePilot® is a central controller unit for RADEMACHER radio products. Control is carried out via a tablet PC or Smartphone.

User interface

The software for configuration of the HomePilot®.

LAN (Local Area Network)

Abbreviation for a wired, local computer network

WLAN (Wireless-LAN)

Abbreviation for a local radio network

WPS (Wi-Fi Protected Set-up)

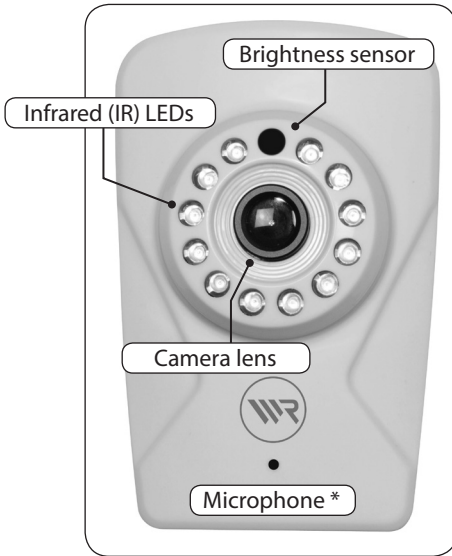
Direct and safe connection of two devices in a radio network with the help of the WPS function.



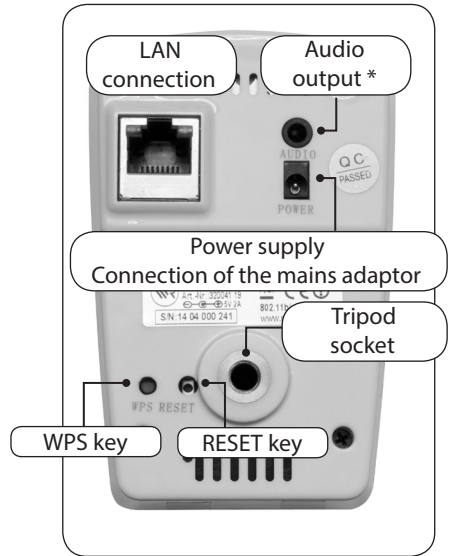
2. Overview of the IP Camera

EN

Front view



Reverse side



Side view



* The following elements are not supported by the HomePilot®.

- ◆ Microphone
- ◆ Audio output
- ◆ Micro SD memory card

You require the following to register the IP Camera 9483:

- ◆ Internet access.
- ◆ A router* with DHCP server and a free LAN port.
- ◆ A freely accessible mains socket (230 V / 50 Hz).
- ◆ A commercially available standard computer with current web browser.
- ◆ A HomePilot® with software version 3.2 or higher **

The HomePilot® must be connected to the router and be accessible in the network via computer.

* *or DSL modem with router functionality.*

** *You can find the current software version for the HomePilot® under:
Configuration / System / Firmware Update / display right*

4. Prerequisites for configuring the IP Camera settings

Conditions for configuring the IP Camera 9483 settings:

- ◆ The IP Camera must be logged-on to the HomePilot®.
- ◆ The IP Camera and the HomePilot® must be in the same local network (LAN or WLAN).

**Configuration via WR-Connect is not possible.**

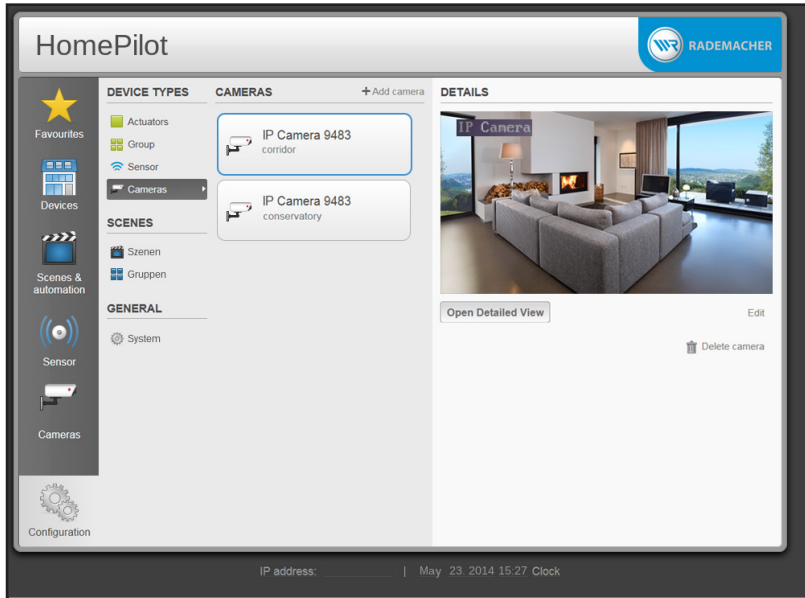
The configuration software of the IP Camera must be accessed in the local network.

- ◆ The IP Camera must be connected to a 230 V / 50 Hz mains socket and be switched on.

Conditions for initial installation of the IP Camera 9483:

- ◆ The camera must be connected to the network router with a LAN cable for the initial installation and to configure the WLAN settings.

The IP Camera and the router are registered in the same local network and the user interface of the HomePilot® is displayed in your browser.



1. Open the "**Configuration**" menu.

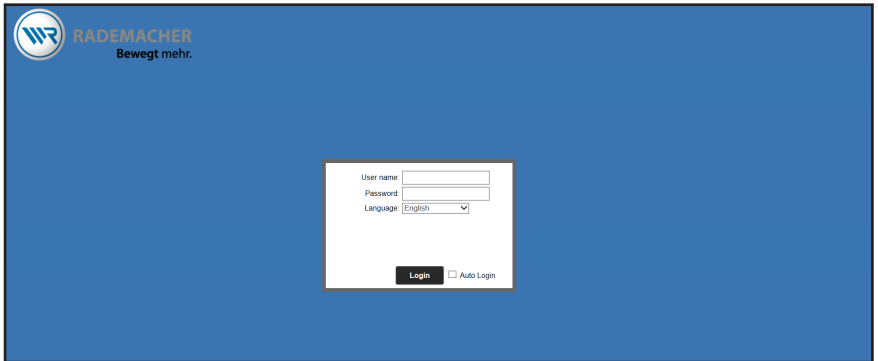
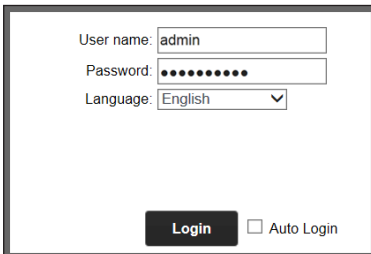
The connected IP Camera is selected directly and the camera image will appear in the right column.

You have the following options:

- ◆ **Open detailed view**
Enables you to configure the camera settings.
- ◆ **Edit**
Enables you to change the name of a registered camera.

2. Select "Open detailed view".

Next, the IP Camera's registration menu will appear:

**3.** Enter the user name (see default factory settings) as well as the password and select the desired language.**Factory settings:**

- ◆ User name: admin *
- ◆ Password: rademacher **

* The user name cannot be changed.

** The password can be changed at any time via the "**System - Edit**" menu.



5. Opening the configuration software of the IP Camera

EN



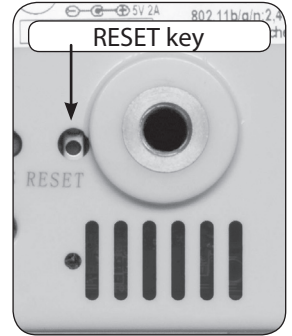
If you already set a password during registration of the IP Camera, you must enter this password.

Have you forgotten your password?

Reset the IP Camera.

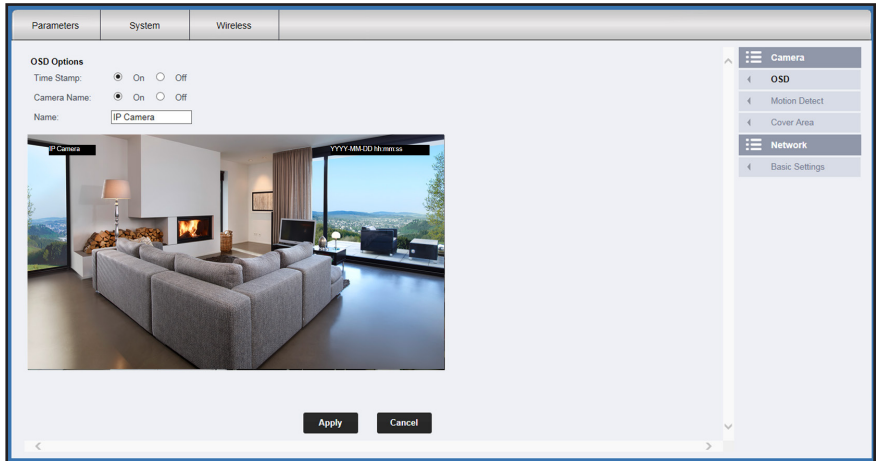
Resetting the IP Camera

Press the RESET key for approx. 5 seconds with a thin but not too pointed object. The camera will then be reset to the default factory settings.



4. Select "**Save**" to prevent this window from reappearing when next dialling-in.

5. Select "**Register**" to switch to the main menu.



All camera and network settings can be accessed via the task bar at the top of the screen and in the right column.

The menus and setting options in the main menu.

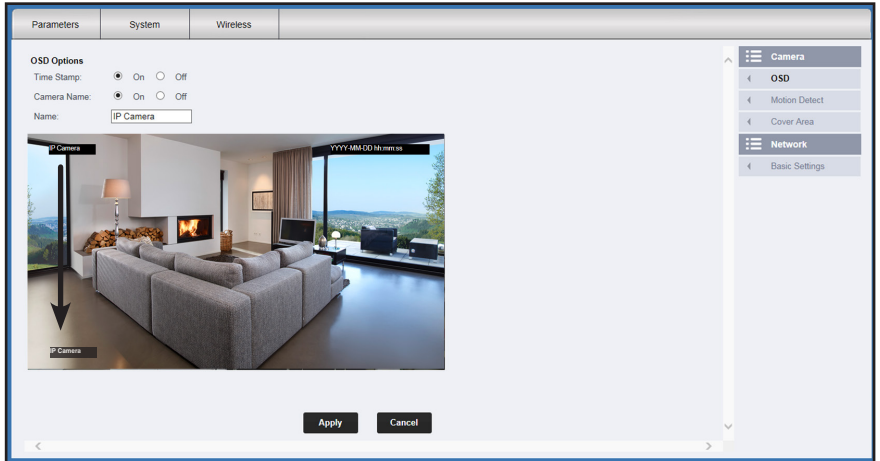
- ◆ **Parameters - Camera**
 - OSD
 - Motion Detect
 - Cover Area
- ◆ **Parameters - Network**
 - Basic Settings
- ◆ **System**
 - User
 - Time settings
 - Initialisation
 - Device information
 - System log
- ◆ **Wireless**

Every setting can be saved by clicking on "Apply"



For your settings to become effective, you must save every setting/parameter by selecting "**Apply**".

Alternatively each setting/parameter can be deleted by selecting "**Cancel**".



Brief description

Activate or deactivate additional information in the image.

The following settings are available:

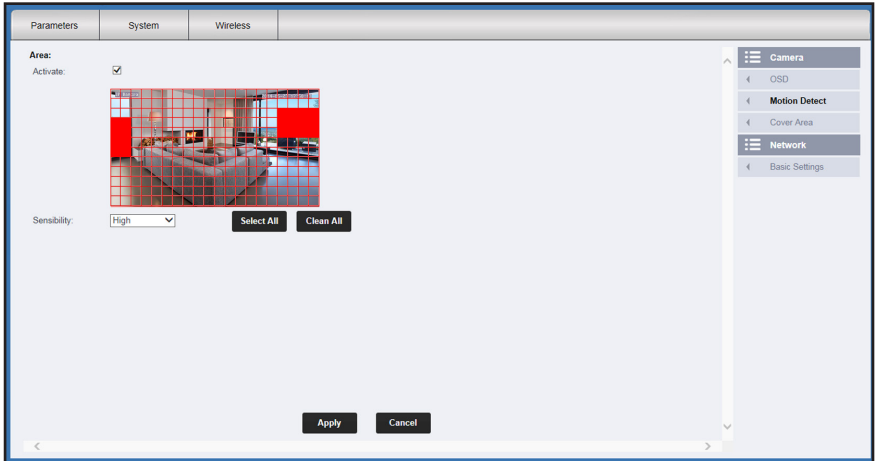
- ◆ **Time stamp On/Off**
The date and the time are displayed with the time stamp
- ◆ **Camera name On/Off**
A text box with the current camera name.
- ◆ **Name**
A name for the camera can be entered into this text box.

Positioning the text boxes by moving them

The two text boxes "**Time stamp**" and "**Camera name**" can be moved and positioned in the image.



The date and time can be adjusted at any time via the "System - Time setting" menu, see page 17.



Brief description

The camera has an integrated digital motion detection function. As soon as motion is detected in a marked image section, this movement can be used as "Automation for scenes" in the HomePilot®.

The image section that is to be monitored can be freely selected.

The following settings are available:

◆ **Activate**

Activate or deactivate the function.

◆ **Select one or more image sections in the grid**

Click and hold the mouse whilst moving across the image section that is to be monitored. The areas selected in the grid will colour in red.



Only the areas marked and highlighted in red will be monitored. You can select and mark multiple image sections.

◆ **Sensibility**

Set the sensibility of the motion detection:

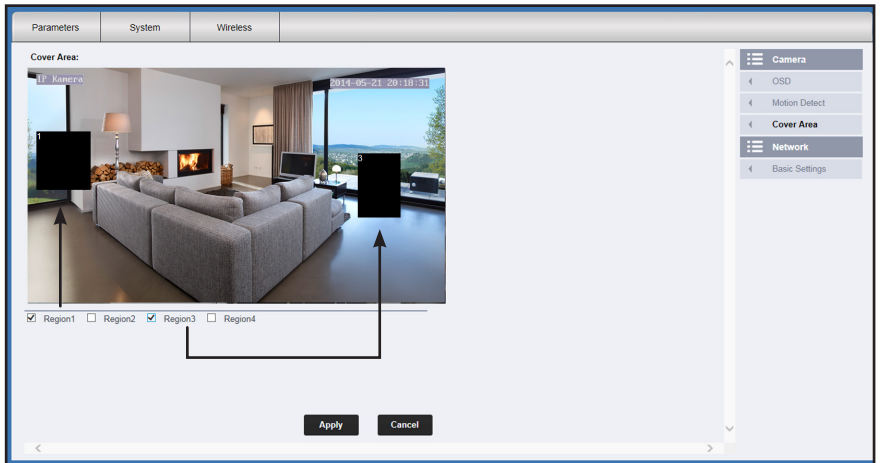
- Very High / High / Normal / Low

◆ **Select all**

The whole screen is highlighted in red.

◆ **Clean all**

The areas previously marked and highlighted in red are deleted.



Brief description

By blacking, up to four image sections can be excluded from monitoring.

The following settings are available:

◆ Region 1 - 4

Activate or deactivate the regions. A black square will appear on the screen for each region.

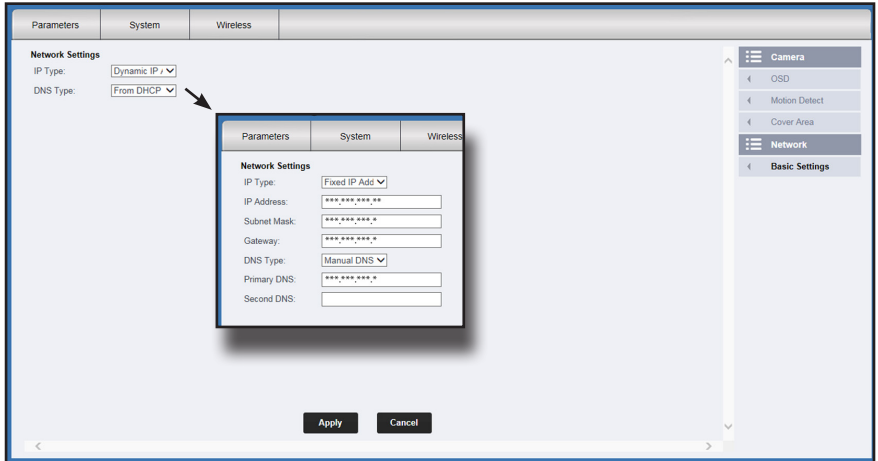
Manually enlarge or move an image section

- ◆ The black areas can be moved freely and positioned on the screen.
- ◆ In addition, the areas can be manually enlarged or made smaller. The mouse cursor will change correspondingly by hovering above a black square with the mouse.



Legal requirements

The IP Camera must not be used to monitor public areas. Use this function, e.g., to exclude such area from the monitoring.



Brief description

The IP address of the camera can be set here. The settings apply for the LAN and WLAN (wireless) network.



The WLAN function is inactive as long as the IP camera is connected to the HomePilot® with a LAN cable.

The following settings are available:

◆ IP Type

- Fixed IP Address
Should you select this function, further text boxes will open so that the IP address can be set manually.
- Dynamic IP Address (RECOMMENDED)
The IP address is automatically determined and allocated.

◆ DNS Type (DNS = Domain Name System)

- Manual DNS
Should you select this function, further text boxes will open so that the DNS server can be set manually.
- From DHCP Server (RECOMMENDED)
The DNS address is automatically determined and allocated.

Brief description

An individual access password can be entered here for the IP Camera.

The following settings are available:

◆ Password - Verify password

Enter the password in both text boxes.

Maximum number of characters

A maximum of 16 characters can be entered. Umlauts cannot be used.

Secure passwords

Please enter a secure password. Secure passwords consist of a combination of different characters (letters / special characters and numbers). Do not use any personal details, e.g. birthdays.



The user name cannot be changed.

Parameters System Wireless

Adjust:

Date & Time: 2014-09-25 12:24:41

Server Name: time.windows.com

Interval: 2 hour

Time Zone: (GMT+01:00) AmsterdamBerlinBernRomeStockholmVienna

DST 30min 60min

Auto Update Time:

Apply Cancel

System

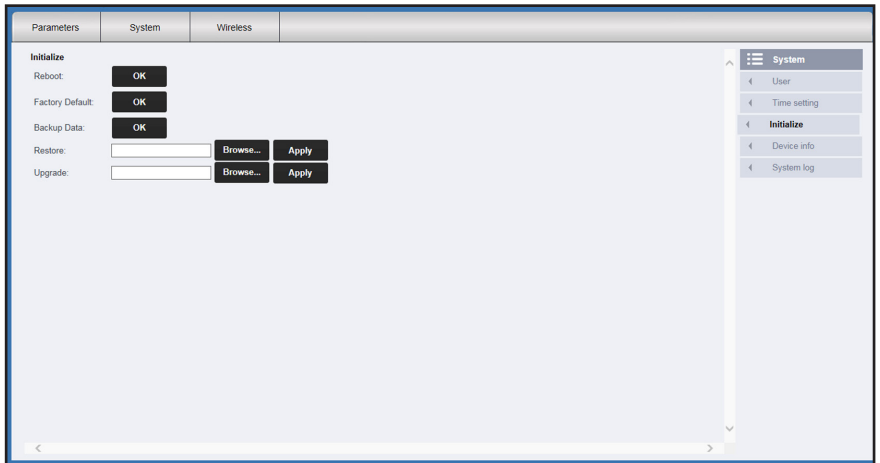
- User
- Time setting
- Initialize
- Device info
- System log

Brief description

Settings can be carried out here for the IP Camera's internal system time.

The following settings are available:

- ◆ **Date and time - (only display)**
Displays the current date and time.
- ◆ **Server name**
If required, an internet server can be entered here from which the current universal time is obtained.
Factory setting = time.windows.com
- ◆ **Interval**
Select the interval at which the time should be updated.
Factory setting = 2 hours
- ◆ **Time zone**
Select the time zone in which the IP Camera is installed.
Factory setting = (GMT+01:00) AmsterdamBerlinBernRome...
- ◆ **Automatically adjust summer / winter time**
Activate or deactivate the function and select the interval (30 min. / 60 min.) to adjust this.
Factory setting = 60 min.
- ◆ **Automatically update time**
Activate or deactivate the function.



Brief description

The IP Camera settings can be saved here or, if required, be reset to the default factory settings.

The following settings are available:

- ◆ **Reboot**
The IP Camera is rebooted.
- ◆ **Factory Default**
The IP Camera settings will be reset to the default factory settings.
- ◆ **Backup data**
The backup data for your camera settings can be created and saved here.
- ◆ **Restore**
Input previously created backup data.
- ◆ **Upgrade**
Open and apply an update file of the settings programme.
Programme updates are regularly published on our website and can be downloaded from:
www.homepilot.de/downloads



5.9 System - Device Information

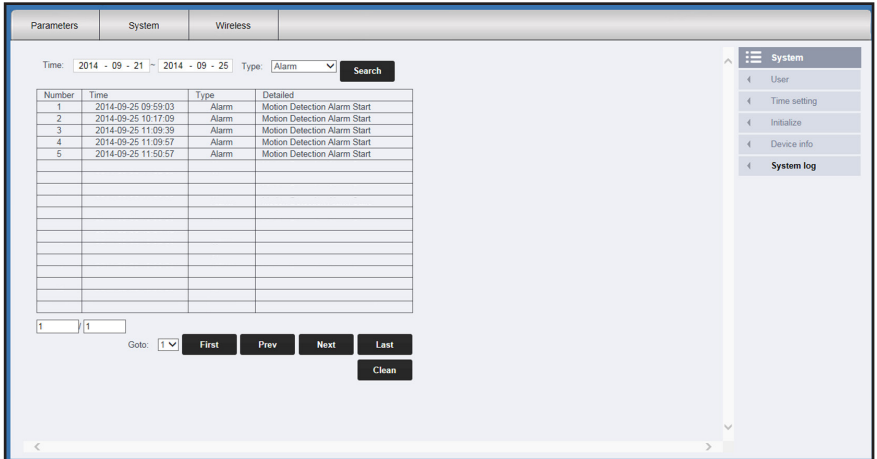
The screenshot shows a web interface with three tabs: Parameters, System, and Wireless. The System tab is active, displaying two sections: Device Info and Network Info. The Device Info section lists: Camera Name: IP Camera, Serial Number: VV94831403245332-b91DShpEifTVdpA, Web Version: V1.1.1.0, Hardware Version: 5300-ov9712a, Software Ver: V2.2.8.23-M20-Build.20140521T, and Start Time: 0 day, 0:18. The Network Info section lists: Connection: LAN, MAC: **:*:*:*:*:*:*:*:*, Wireless MAC: **:*:*:*:*:*:*:*:*, IP: ***,***,***,***, Subnet Mask: ***,***,***,**, Gateway: ***,***,***,**, Primary DNS: ***,***,***,**, and Second DNS: *,*,*,*. On the right side, there is a vertical menu with options: System, User, Time setting, Initialize, Device info (highlighted), and System log.

Brief description

In this menu, various status information regarding the IP Camera and the network is displayed.



No additional settings are available.



Brief description

All events are recorded in a "log file" and saved. E.g., activation of the motion detection.

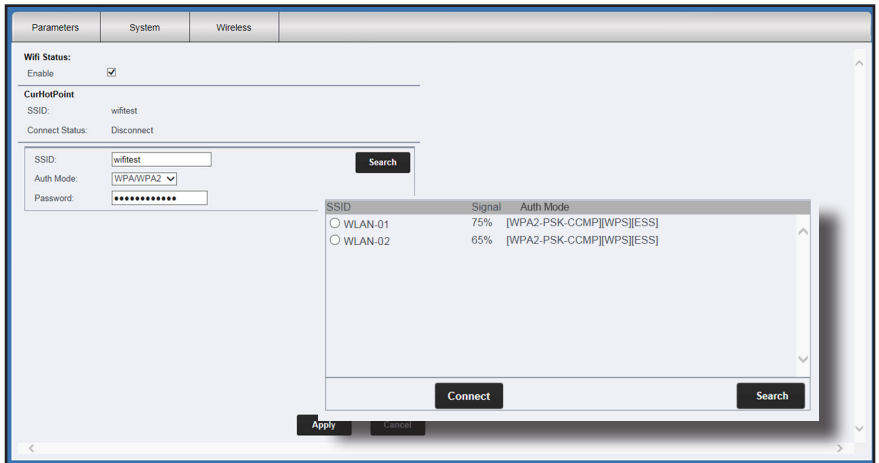
In this menu, specific events and periods can be searched within this "log file" and can be displayed in the form of a list.

The following settings are available:

- ◆ **Time**
Enter the period in which an event should be searched.
- ◆ **Type**
 - All = All events are displayed
 - Alarm = All motions detected are displayed.
 - Operation = All settings are displayed.
- ◆ **Search**
Press the **"Search"** button to open the selected list.
- ◆ **Clean**
Delete the log file.

Navigation within the lists

Under the lists, you will find various displays and buttons for further navigation within the lists.



Brief description

The IP Camera can be logged-on to an existing radio network here.



Prerequisites for wireless (WLAN)

The wireless (WLAN) function is only active if the LAN cable is pulled out of the camera after completing the settings.

The following settings are available:

- ◆ **Wifi enabled**
The WLAN function is activated by ticking the box.
- ◆ **Current network - (no settings possible)**
Status information on the current WLAN radio network.
- ◆ **SSID / Auth mode / Password**
Manual entry of the data for an existing, local radio network.
- ◆ **Search**
Automatically search existing, local radio networks.
Subsequently a window with existing, local radio networks will appear.
- ◆ **Select WLAN radio network**
- ◆ **Enter WLAN access password**

Select a radio network and connect

1. Select the desired radio network.
 2. Press "**Connect**".
A new window will open.
 3. Enter the access password for the selected radio network and confirm by selecting "**OK**".
 4. Save this setting by selecting "**Apply**", see page 11.
-

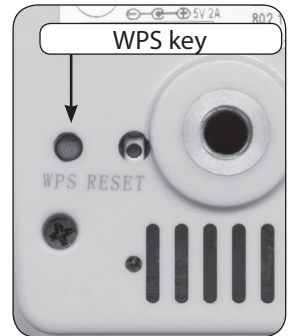
5.11.1 Alternative WLAN connection with WPS

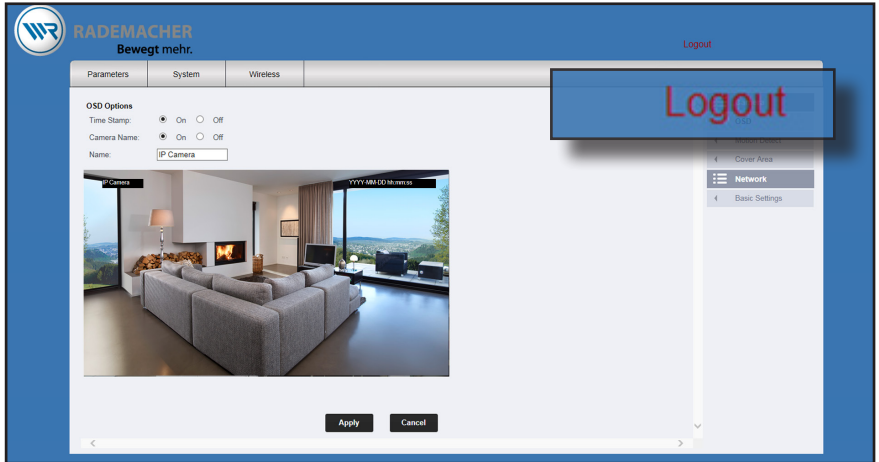
You can also connect the IP Camera directly to the WLAN router or to your local radio network by means of the WPS function.

**Prerequisites to connection
WLAN via WPS**

- ◆ The WPS function must be supported by your router.

-
1. Briefly press the WPS button on the IP Camera.
For this, use a thin but not too pointed object.
 2. Subsequently activate the WPS function in your router.
After this, the IP Camera is connected to the WLAN router or to the local radio network.
-





1. At the top of the screen, click on the "**Logout**" button.
2. Remove the LAN cable from the IP Camera and the HomePilot® if you wish to use the WLAN connection.
3. The configuration of the IP Camera settings is now complete.



Automatic WLAN search after interrupting the power supply.

For further installation of the IP Camera, the power supply may be briefly interrupted. As soon as the power is connected again, the IP Camera will automatically search for the previously registered WLAN radio network.

RADEMACHER

Geräte-Elektronik GmbH
Buschkamp 7
46414 Rhede (Germany)
info@rademacher.de
www.rademacher.de

Service:

Hotline 01807 933-171*
Fax +49 2872 933-253
service@rademacher.de

* 30 seconds free of charge, subsequently 14 cents / minute from German fixed line networks and max. 42 cents / minute from German cellular networks.